

Thank you for your purchase of the RA660 Audiometer!

There are several things to know about this device before we begin.

- The RA660 is a PC based audiometer. This means it requires a software program to control the audiometer, this software is included.
- The acoustic simulator for the RA660 is actually built into the device, as opposed to requiring a separate device to achieve OSHA compliance.
- There is an optional octave band monitor which can monitor the ambient noise levels in the room you are testing. If you did not purchase this feature, it can be added at anytime by contacting your distributor.
- Your local distributor is a very important link in your hearing conservation program! Make sure you know who handles your area, as they are the people who will handle calibration, sound booth certifications, as well as any repairs you may need done. This will likely be who you bought the audiometer from, but you can contact Tremetrics at any time for questions (800-825-0121).

Loading the "RA660 Software"

- It is **STRONGLY SUGGESTED** you have your computer online for the installation process.
- On the included USB drive there is a program called, "RA660 User Utility." Double click this to run.
- Allow software to install any required drivers.
- Also on the thumb drive is the user manual.

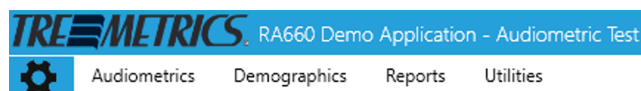


Setting Up Your Audiometer



Getting Started With Your PC

- The Start Screen of the RA660 User Software contains a Tremetrics logo as well as tiles which can link you to many valuable product features and enhancements.
- Make sure you register your audiometer through the "Register your Audiometer Now," tile. This will ensure you will get access to any product updates immediately upon release.
- The menu bar for the RA660 is pictured below. The blue gear image is the settings tab.
- Consult the user manual for any specific questions about configuration, but the default settings will be fine for legal compliance.



Organizational Levels

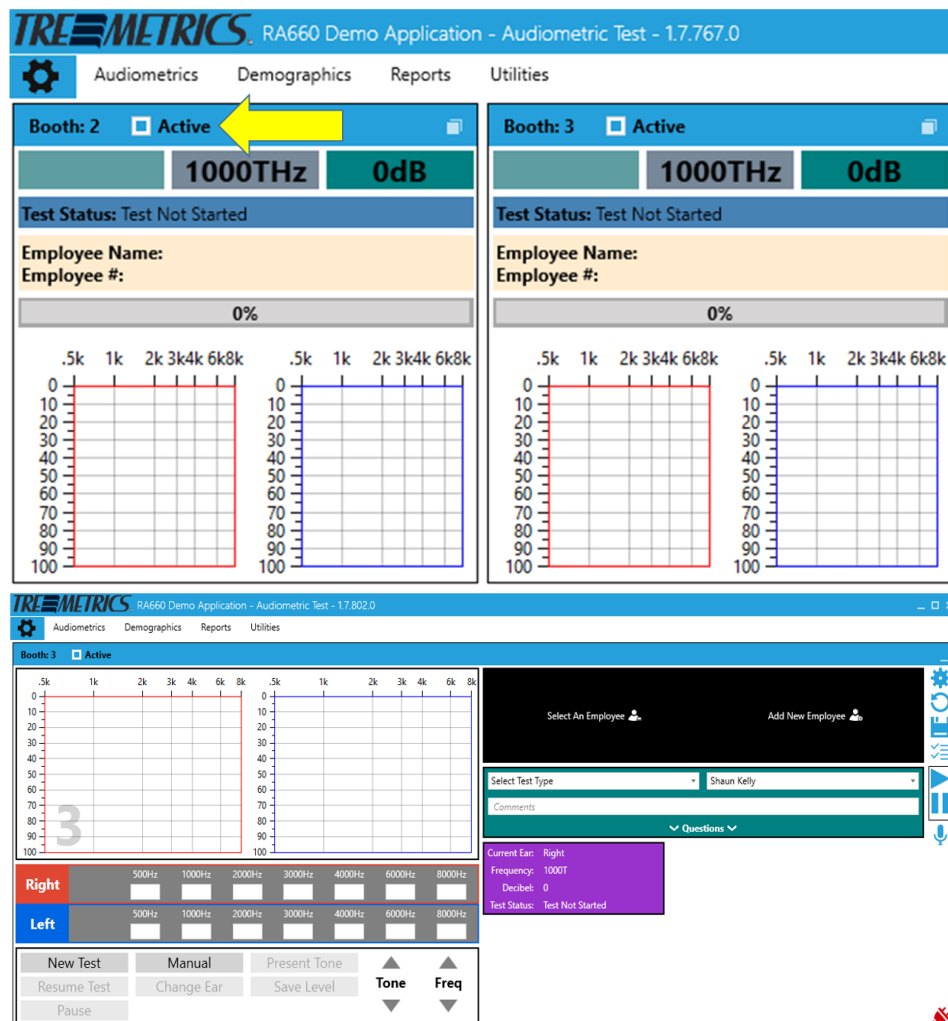
- Organizational Levels are required fields. They are found under the "Utilities" tab at the top of the screen.
- By clicking the plus button you are able to add your company and plant/facility.
- The software will hold as many companies and plants as you wish.
- **YOU WILL NEED A COMPANY AND PLANT TO BEGIN TESTING!**

Company			
Company Name:	Tremetrics	Company Code:	TRE
Address:	10393 West 70th Street	State:	MINNESOTA
City:	Eden Prairie	Phone:	(800)825-0121
Zip:	55344		

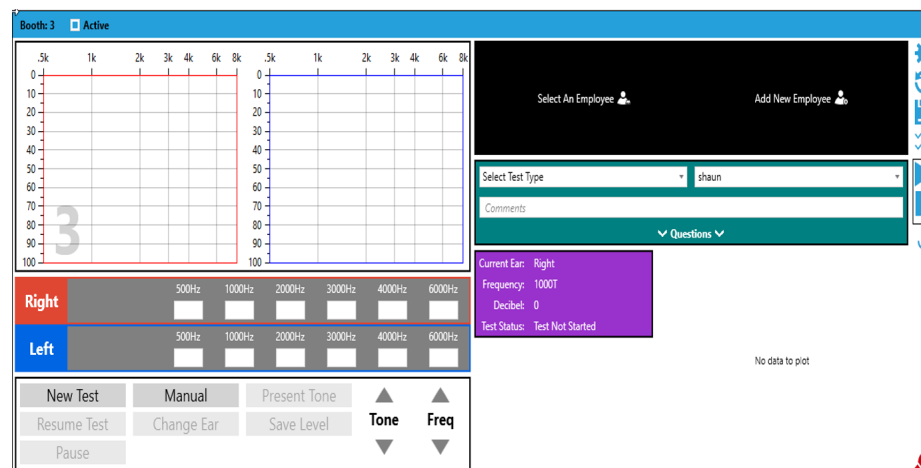
Plant			
Parent Company:	Tremetrics	Plant Code:	TRE EP
Plant Name:	Tremetrics Manufacturing Facility	State:	MINNESOTA
Address:	10393 West 70th Street	Phone:	(800)825-0121
City:	Eden Prairie		
Zip:	55344		
Regulation:	OSHA	MSHA	

Overview vs. Detail View Screens


- The Overview Screen is what the software will default start at.
- This allows you to view a condensed version of all audiometers being used at the time.
- The Detailed Screen view allows you a larger, more detailed view of one audiometer at a time.
- This is also where you can view the real time results of your room monitor.
- Click the blue space next in the bar where the booth number is to toggle between the two views (yellow arrow).



Testing – Detail View Screen

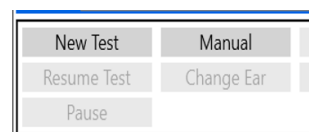



Testing Explained

- This icon  on the right of the screen is the daily biological and listening check tab. These checks should be completed prior to testing for the day.
- “New Test,” starts a test. Employee can be added before, during or after the test.



- The test will run automatically, you can test manually by pressing “Pause” and then “Manual.”



- This icon  saves the test once it has completed.
- This is a very basic overview, please consult the manual to explore all the other features!